


Name: _____

Date: _____

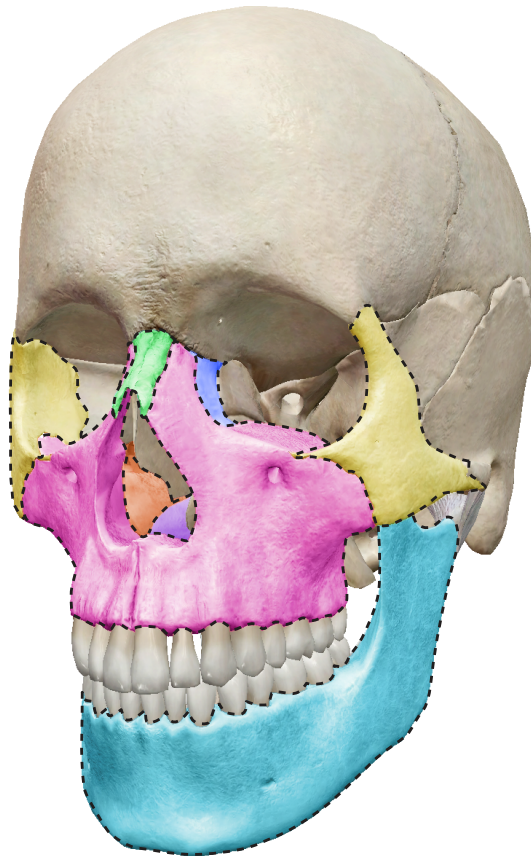
Activity 1: Skull Bones Lab

1. Launch the view!

- Launch Human Anatomy Atlas.
- Navigate to Quizzes/Lab Activities, find the Skull Bones Lab section.
-  **Launch Augmented Reality mode and scan the image below.**
- Don't have AR? Select **view 1. Skull.**

2. Explore the skull bones.

- Select the structures, read their definitions, and study the hierarchy breadcrumb trail.
- In the table, use this information to classify the skull bones in the word bank as either facial bones or braincase bones.



Name: _____

Date: _____

Word bank:

- Ethmoid bone
- Frontal bone
- Inferior nasal conchae
- Lacrimal bone
- Mandible
- Maxillae
- Nasal bone
- Occipital bone
- Palatine bone
- Parietal bone
- Sphenoid bone
- Temporal bone
- Vomer
- Zygomatic bone


Facial Bones	Braincase

Name: _____

Date: _____

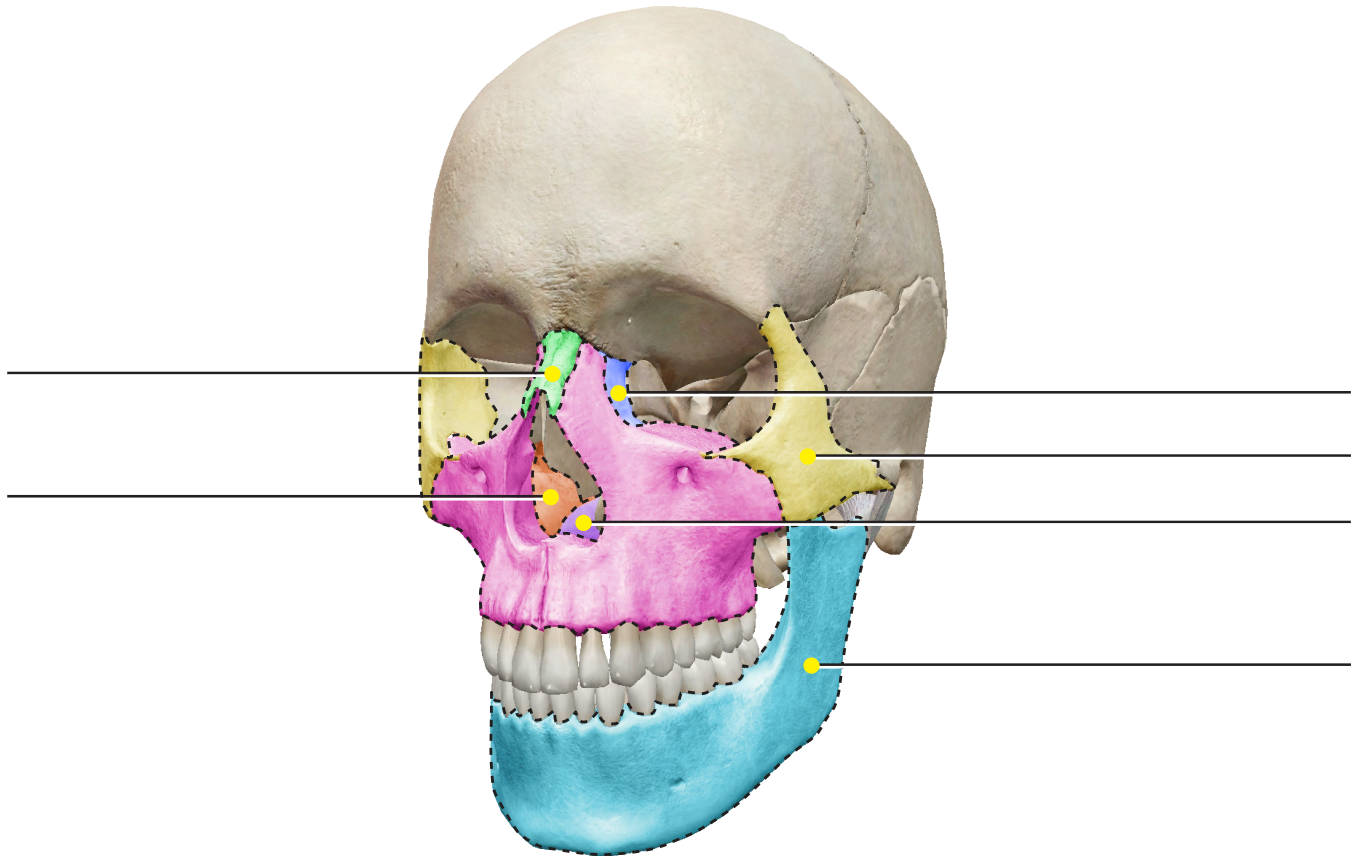
Activity 2: Skull Bones Lab

1. Launch the view!

- Launch Human Anatomy Atlas.
- Navigate to Quizzes/Lab Activities, find the Skull Bones Lab section.
-  **Launch Augmented Reality mode and scan the image below.**
- Don't have AR? Select **view 1. Skull.**

2. Label the image.

- Explore the 3D model of the skull to locate the anatomy in the structure list.
- Use the structure list to label the image.



Structure list:


- | | |
|--------------------------|--------------|
| 1. Inferior nasal concha | 4. Nasal |
| 2. Lacrimal | 5. Vomer |
| 3. Mandible | 6. Zygomatic |

Name: _____

Date: _____

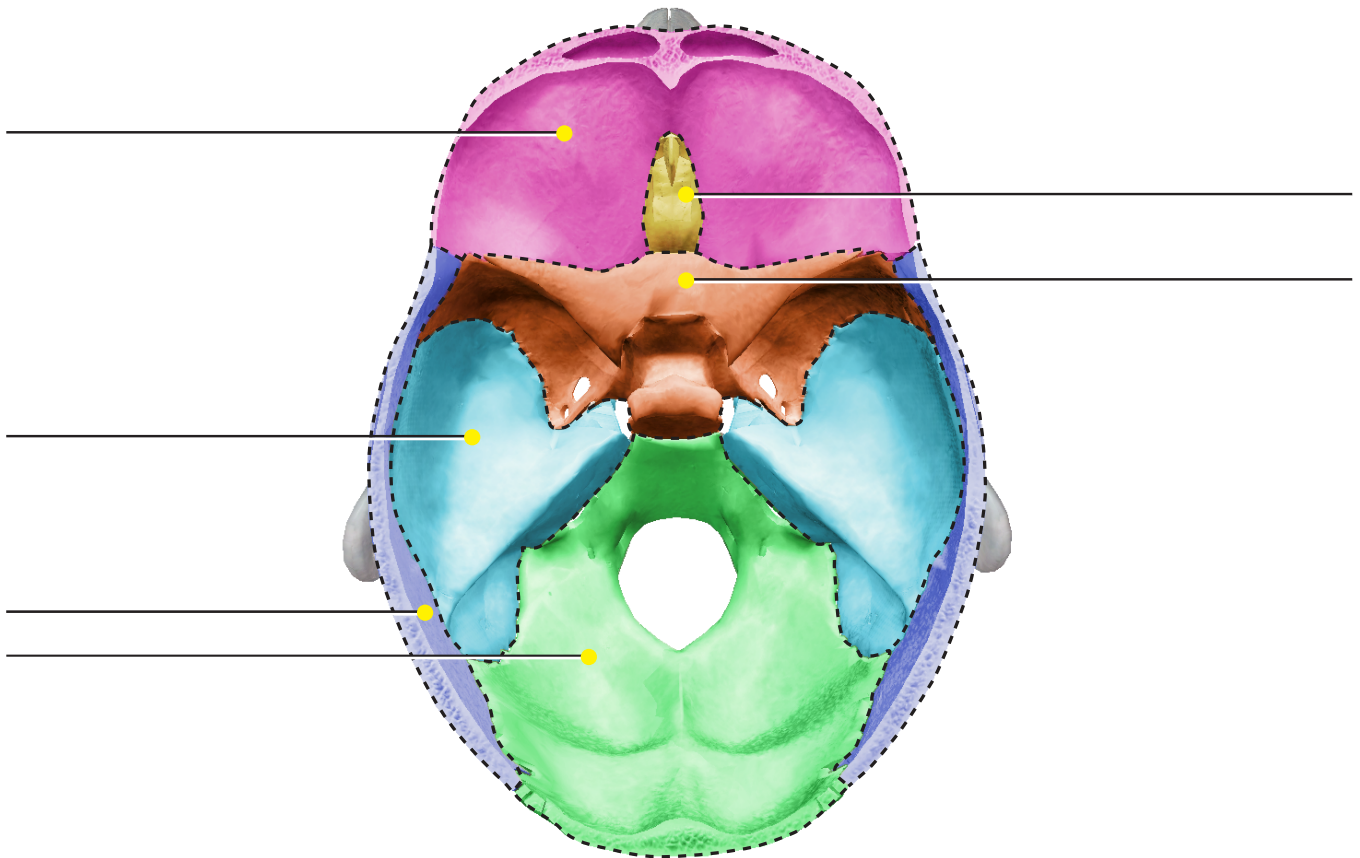
Activity 3: Skull Bones Lab

1. Launch the view!

- Launch Human Anatomy Atlas.
- Navigate to Quizzes/Lab Activities, find the Skull Bones Lab section.
-  **Launch Augmented Reality mode and scan the image below.**
- Don't have AR? Select **view 2. Braincase.**

2. Label the image.

- Explore the 3D model of the braincase to locate the anatomy in the structure list.
- Use the structure list to label the image.




Structure list:

- | | |
|--------------|-------------|
| 1. Ethmoid | 4. Parietal |
| 2. Frontal | 5. Sphenoid |
| 3. Occipital | 6. Temporal |

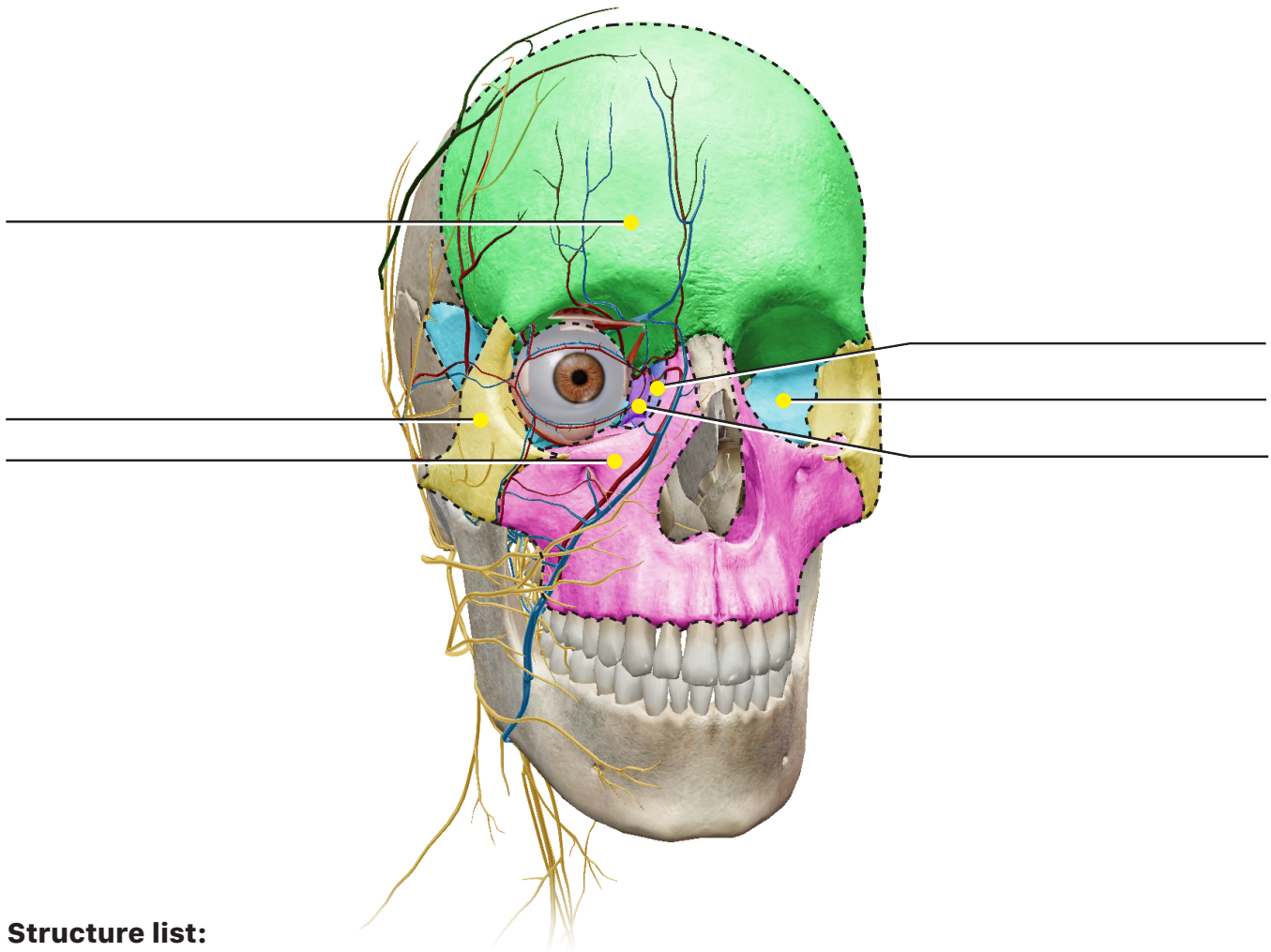
Activity 4: Skull Bones Lab

1. Launch the view!

- Launch Human Anatomy Atlas.
- Navigate to Quizzes/Lab Activities, find the Skull Bones Lab section.
-  **Launch Augmented Reality mode and scan the image below.**
- Don't have AR? Select **view 3. Bones of the Orbit.**

2. Label the image.

- The orbits are the cavities in the skull that protect the eyes.
- Explore the 3D model of the skull to locate the anatomy in the structure list.
- Use the structure list to label the image.



Structure list:


- | | |
|-------------|--------------|
| 1. Ethmoid | 4. Maxilla |
| 2. Frontal | 5. Sphenoid |
| 3. Lacrimal | 6. Zygomatic |

Name: _____

Date: _____

Activity 5: Skull Bones Lab

1. Launch the view!

- Launch Human Anatomy Atlas.
- Navigate to Quizzes/Lab Activities, find the Skull Bones Lab section.
-  **Launch Augmented Reality mode and scan the image below.**
- Don't have AR? Select **view 4. Disarticulated Skull.**

2. Explore the animated skull.

- Note that this is an animated skull model.
- Observe how the bones fit together.

